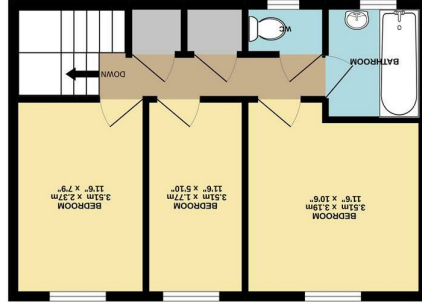
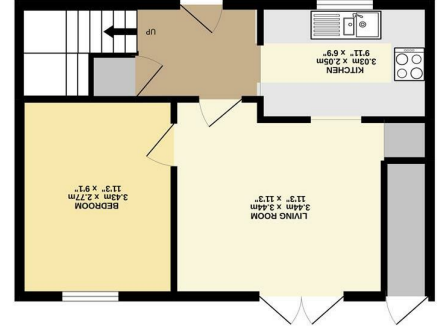


What every applicant has been made to ensure the accuracy of figures contained here, measurements of doors, windows, rooms and other items are approximate and no responsibility is taken for any error, omission or misstatement. This plan is for illustrative purposes only and should be used as such only, as to their operability or efficiency can be given. Made with floorplan 2022.

TOTAL FLOOR AREA: 76.2 sq.m. (820 sq.ft.) approx.



38.1 sq.m. (410 sq.ft.) approx.



38.1 sq.m. (410 sq.ft.) approx.

Disclaimer - In accordance with the Property Misdescriptions Act, the company gives notice that all descriptions, references to condition, necessary in good faith and believed to be correct, but any intending lessees do not rely on them as statements of fact, but must satisfy themselves by inspection or other means, as to their accuracy.

England & Wales	
EU Directive 2002/91/EC	
Not energy efficient - higher running costs	
(1-20)	G
(21-30)	F
(31-40)	E
(41-50)	D
(51-60)	C
(61-70)	B
(71-80)	A
Very energy efficient - lower running costs	
(81-91)	
(92 plus)	
Current	75
Potential	88

Energy Efficiency Rating



Norfolk Property online.

Skoner Road | Norwich | NR5
Offers in excess of £225,000

**Norfolk Property
online.**

Norfolk Property online presents this deceptively spacious home, which is ideally situated within a quiet residential close, within easy reach of a wealth of local amenities, the University and the hospital. Offered to the market with no onward chain, the accommodation comprises; entrance hall, kitchen, lounge and dining room/bedroom four to the ground floor, with the first floor offering three comfortable bedrooms, bathroom and a separate WC. Externally, the rear garden affords a high degree of privacy and access to secure storage. An internal viewing comes highly recommended

